



Rates

| Room Type | Rate |
|-----------------------------------------|--------|
| Single | £40.00 |
| Twin | £50.00 |
| Twin En-Suite | £60.00 |
| Double En-Suite | £60.00 |
| Triple | £65.00 |
| Triple En-Suite | £75.00 |
| Family En-Suite (Double & 2 Singles) | £75.00 |
| Family Suite | £85.00 |

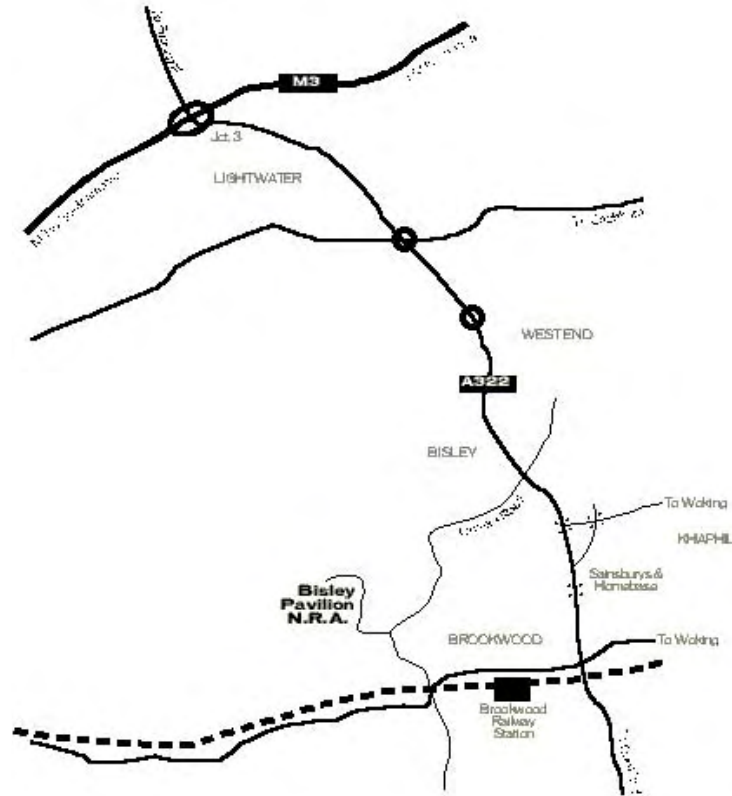
All prices above are inclusive of VAT at 17.5%. Prices are subject to availability & change and are correct at time of going to press, November 1999.

Family room is defined as 2 adults & 2 children under 14 years old sharing.

Please make cheques payable to S K Hopwood V.A.T. No: 641 5457 42



Location



Bisley Pavilion

Venue & Accommodation



BOOK NOW !



To make your reservation please call us now on:

**+44 (0)1483
488488**

Bisley Pavilion
National Rifle Association
Queens Road
Brookwood
Woking
Surrey GU24 0NY

Tel: +44 (0)1483 488488 Fax: +44 (0)1483 797620

Web: www.bisleypavilion.com/welcome

E-Mail: bp@delivernow.co.uk

ACCOMMODATION

Dear Guest

Please find within details of the new accommodation that we are offering at Bisley Pavilion.

Work commenced in January, 98 to transform redundant space at Bisley Pavilion into the all new 14 room accommodation facility. In September, 99 we were pleased to open our doors for the first time and since have been offering a high standard of lodging.

The rooms are open 365 days a year and offer the perfect economical accommodation option for those travelling both on business and leisure. Situated above the Bisley Pavilion venue complex, our rooms offer the perfect comfort required for those attending events at Bisley Pavilion or otherwise.

We offer unlimited parking facilities and are ideally situated midway between Woking and Guildford, off the A322 at the National Rifle Association, Bisley Camp, within 1 mile of Pirbright.

Finally, Bisley Pavilion offers superb events facilities with 4 rooms available to hire, catering for a total of 530 guests if required. Please feel free to request our separate brochure or visit our web site at www.bisleypavilion.com/welcome for further details.

Please don't hesitate to contact us to discuss your requirements, visit our venue/accommodation or enquire in anyway further.

Kind Regards

S. K. Hopwood

Mr Shaun Hopwood
Proprietor

Tel: +44 (0)1483 488488



Rooms

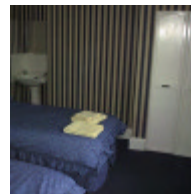
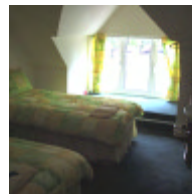
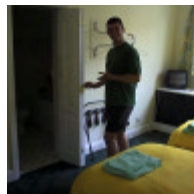
The accommodation comprises of 14 individually designed rooms. Each room is decorated to a high standard after being completed or re-furnished in September 1999.

Offering a mixture of en-suite and shared facilities, the accommodation caters for all. Several of our rooms feature fantastic views over the surrounding countryside and others offer characteristic alcove windows.

Which ever room type you choose to book, you'll be guaranteed a friendly, comfortable stay in some of Surrey's most beautiful countryside within 15 mins. of the M25/M3 motorway network and the major towns of Guildford & Woking.

Each and every room at Bisley Pavilion offers the following:

- Telephone
- Colour Television
- Tea & Coffee Facilities
- Towels & Comfortable Linen
- 4 Sq. Miles of Countryside !



History



Located on the internationally renowned site of the National Rifle Association, Bisley Pavilion is forged in history.

Initially constructed to serve as an Officers Mess by Bovis Construction in 1924, Bisley Pavilion formed the final part of the National Rifle Associations relocation from Wimbledon common in 1889.

The change from Officers Mess to the now commercial Bisley Pavilion is unclear, but had definitely started to take place in the 70's. In 1993, three buildings on the National Rifle Association site, Bisley Camp, where recognised by Guildford Borough Council as being first in their class for conservation areas.

The present management occupied Bisley Pavilion in 1993 and started a programme of refurbishment and construction that has lead to today's venue and accommodation facilities.



BisleyPavilion.com

Be sure to take a look at our web site. When you visit the site at: www.bisleypavilion.com/welcome your discoveries will include the following:-

- Location Maps,
- Maps to download and include in your invites etc
- Further information on our history, venue & accommodation.
- This brochure and our venue brochure to download.